



**JK MEDICAL
SYSTEMS PVT LTD**

Easy-on PC

A Benchmark in Ultrasonic PC Spirometry

ndd's Patented True Flow Technology

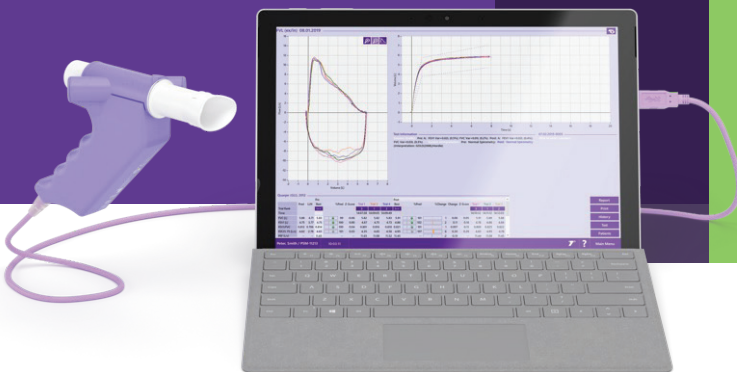
No calibration, no warm-up time, no moving parts

ndd's PC-driven spirometer employs the interactive EasyOne Connect software to deliver rapid, accurate and reliable results. With compelling features such as live curve visualization, animated incentives and integration with leading EMR/EHR systems, the Easy on-PC is the clear choice for PC-connected spirometry.

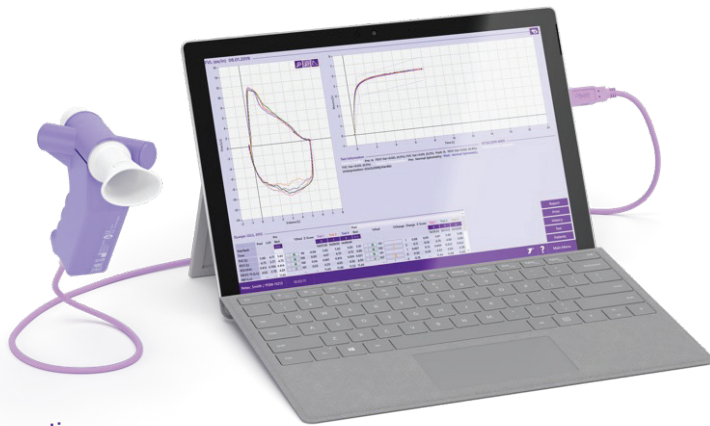
The Easy On PC Spirometer is suitable for paediatric to adult patient use.

Features

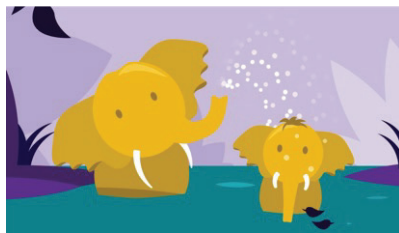
- FVC, FVL, SVC & MVV test
- Pre & Post analysis with Z Score
- Real-time animated incentives
- Proven integration with top EMR/EHR systems
- Long-term trending of results
- Automated quality feedback and Interpretation
- Intuitive software interface
- Integrated provocation test with customizable protocols
- Wide range of selectable predicted values
- Calibration-free technology
- Low running cost
- Lifetime free software upgrade
- Lung age



Simple. Certain. Proven.



Incentive screens
Available with **EasyOne Connect** software



Specifications

Dimension of hand held sensor: 16 x 3 x 7 cms
Weight: 155gms
Cable length: 1.8m
Measuring accuracy: volume +/- 2% or 0.0501 flow +/- 2% or 0.0201 PEF +/-5% or 5l/min
Resolution: volume > 1 ml flow 4ml/s
Measuring range: volume +/- 12l, flow +/- 20l/s
Resistance: approx 0.3 cm H ₂ O/ l/s
Minimum PC Requirement: Core i3-10th Generation, 4 GB RAM/256 GB SSD or 1TB HD Pre-loaded Windows
EMR connectivity: HL7, XML, GDT, API with EasyOne Connect
Interface: USB
Age range: Spirometry > 4 years
Device Classification: Type BF applied part
Operating Conditions: Temp 0 - 40 °C/32 - 104 °F Rel.Humidity 5 - 95 % Atmosph.Pressure 620 - 1060 hPa
BTPS Correction: Auto
Quality, Medical Devices Electrical: ISO 13485, ISO 14971, IEC 62366, & IEC 62304, ISO 26782, ISO 23747, IEC 60601-1, IEC 60601-2, ISO 10993-1
FDA: 510(k) market clearance
MDD 93/42/EEC: CE Marked
Standards: Meets 2022, 2019 & 2005 ATS/ERS standards and NIOSH/OSHA, SSA Disability
Predicted Values: Wide range of predicted authors including Chhabra (India) 2014, GLI



Medical Technologies

nnd Medical Technologies
300 Brickstone Square, Suite 604 Andover, MA, 01810 USA
Phone: +1-978-470-0923

nnd Medizintechnik AG
Technoparkstrasse 1, CH-8005 Zurich, Switzerland
Phone: +41 44 512 65 00

Measured Parameters

FVC ATI, BEV, EOTV, FEF10, FEF25, FEF2575, FEF2575_6, FEF40, FEF50, FEF50/FVC, EF50/VCmax, FEF60, FEF75, FEF75-85, FEF80, FET, FET25-75, FEV.25, FEV.5, FEV.5/FVC, FEV.75, FEV.75/FEV6, FEV.75/FVC, FEV.75/VCmax, FEV1, FEV1/FEV6, FEV1/FVC, FEV1/FVC6, FEV1/VC, FEV1/VCmax, FEV3/FVC, FEV3/VCmax, FEV3, FEV6, FVC, MEF20, MEF25, MEF40, MEF50, MEF60, MEF75, MEF90, MMEF, MTC1, MTC2, MTC3, MTCR, PEF, PEFT, t0, VC, Vcmax

FVL ATI, BEV, CVI, E50/150, EOTV, FEF10, FEF25, FEF2575, FEF2575_6, FEF40, FEF50, FEF50/FVC, FEF50/VCmax, FEF60, FEF75, FEF75-85, FEF80, FET, FET25-75, FEV.25, FEV.5, FEV.5/FVC, FEV.75, FEV.75/FEV6, FEV.75/FVC, FEV.75/VCmax, FEV1, FEV1/FEV6, FEV1/FIV1, FEV1/FIVC, FEV1/FVC, FEV1/VC, FEV1/VCmax, FEV3/FVC, FEV3/VCmax, FEV3, FEV6, FIF25, FIF2575, FIF50, FIF50/FEF50, FIF75, FIV.25, FIV.5, FIV1, FIVC, FVC, MEF20, MEF25, MEF40, MEF50, MEF60, MEF75, MEF90, MIF25, MIF50, MIF75, MMEF, MMIF, MTC1, MTC2, MTC3, MTCR, PEF, PEFT, PIF, t0, VC, Vcmax

SVC ERV, IC, IRV, Rf, VC, VCex, VCin, VCmax, VT

MVV MVV, MVV6, MVVtime, Rf, VCext, VT

nnd
TrueFlow
makes the difference

nnd's unique ultrasonic flow measurement is highly accurate in all flow ranges, independent of gas composition, pressure, temperature and humidity.

nnd **TrueFlow** is a resistance-free solution that does not require calibration during its lifetime.

EasyOne Connect

EasyOne Connect offers full PFT software functionality, including pediatric incentives, QC grading and result interpretation, XML export, custom provocation protocols, and advanced commenter functionality.

Marketed and Sold By:



**JK MEDICAL
SYSTEMS PVT LTD**

1068, Munusamy Salai, West K K Nagar,
Chennai - 600078, Tamilnadu, India.

Phone : +91 44 2366 4761 / 62,

Email : sales@jkmedical.co.in

www.jkmedical.co.in